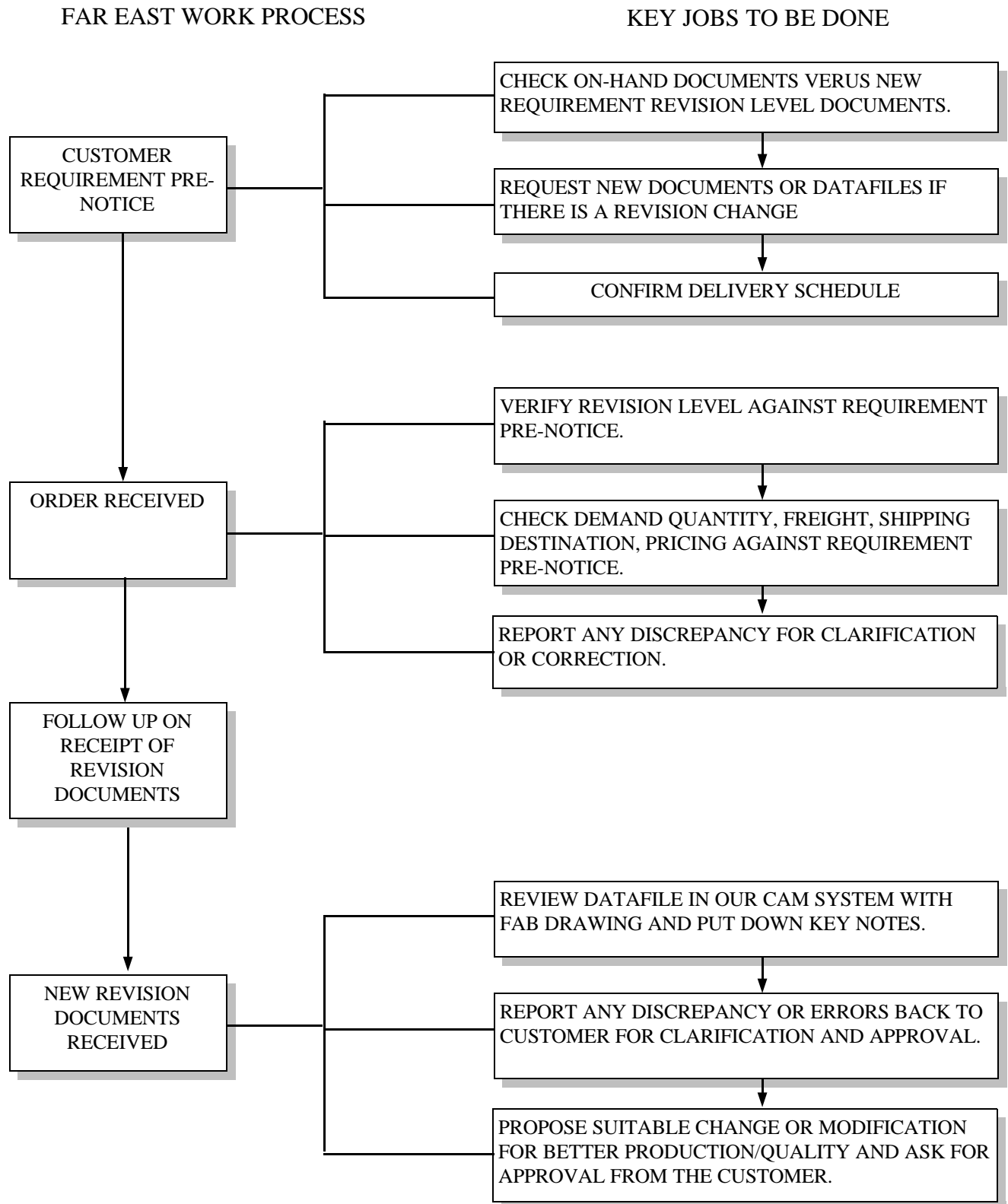
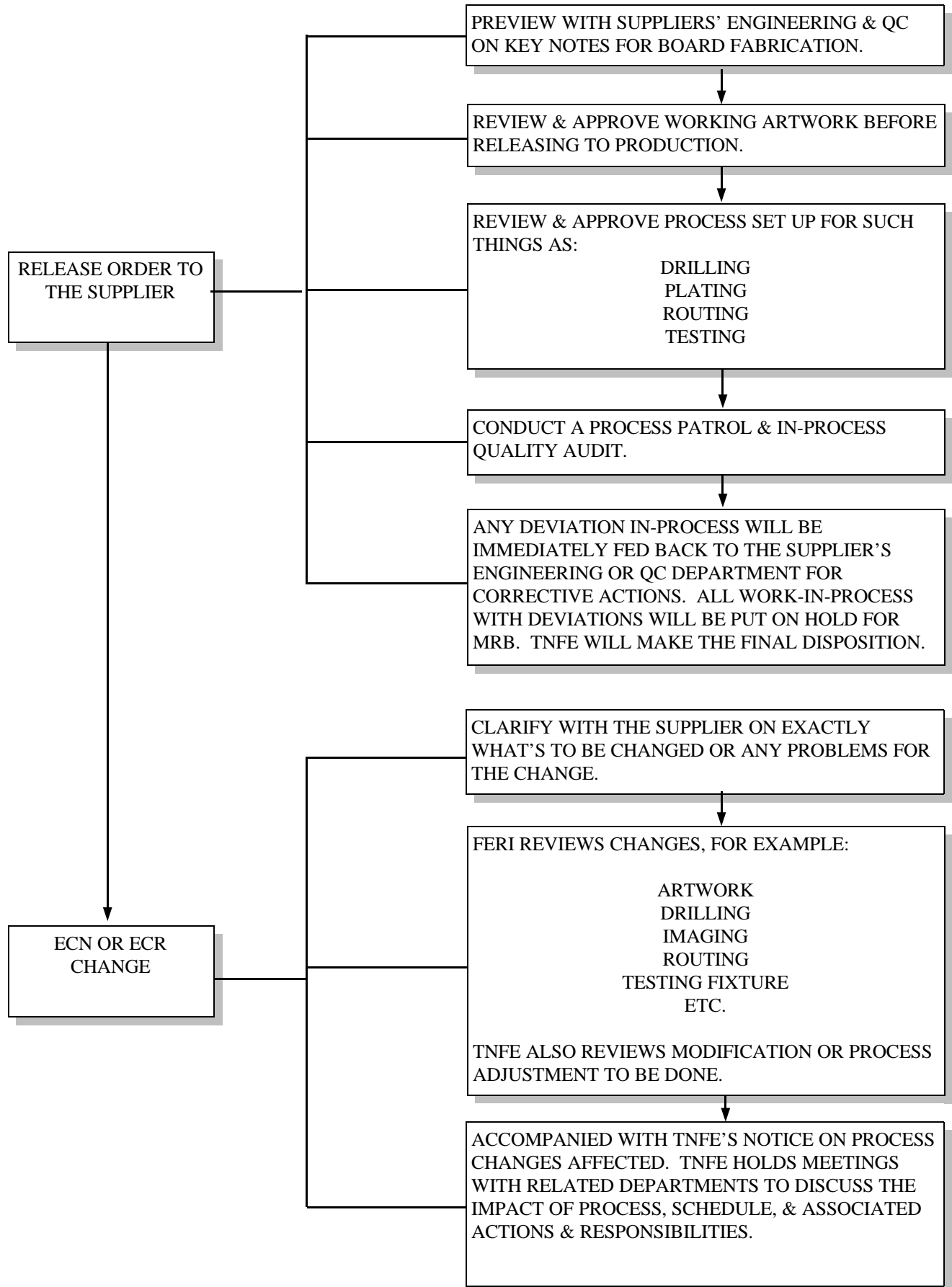


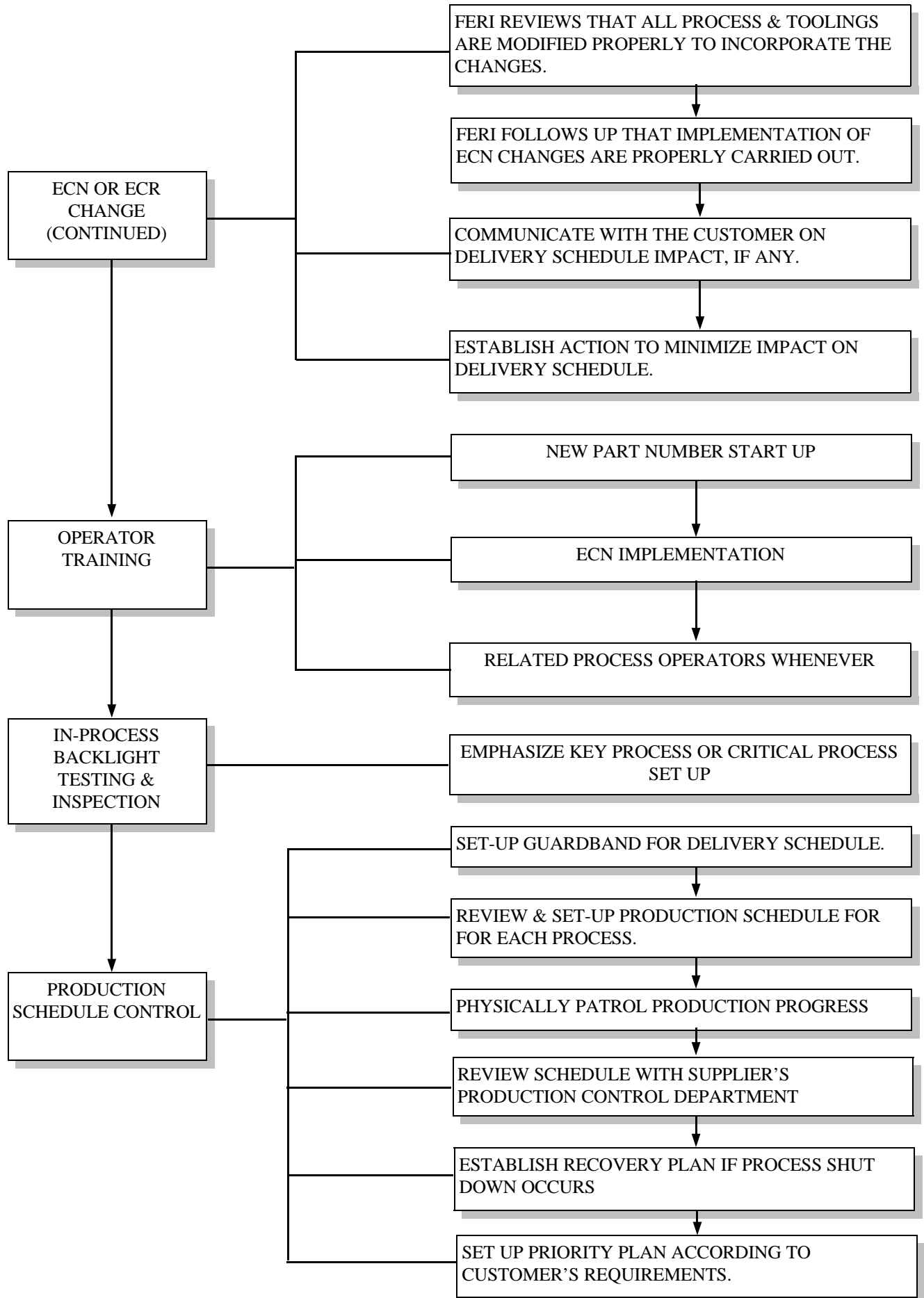
# WORK FLOW PROCESS FOR THE HANDLING OF REPEAT ORDERS



# FAR EAST WORK PROCESS

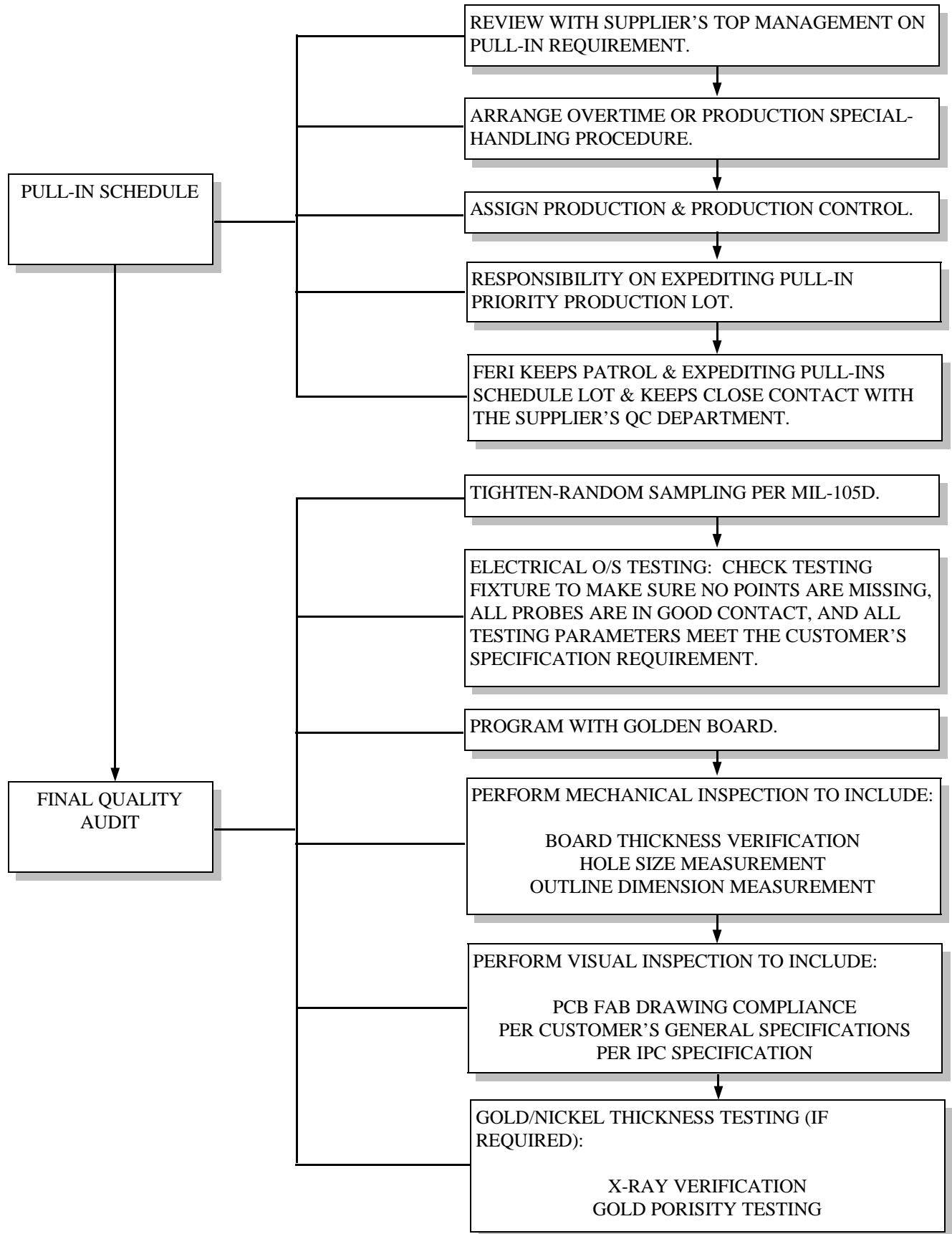
# KEY JOBS TO BE DONE





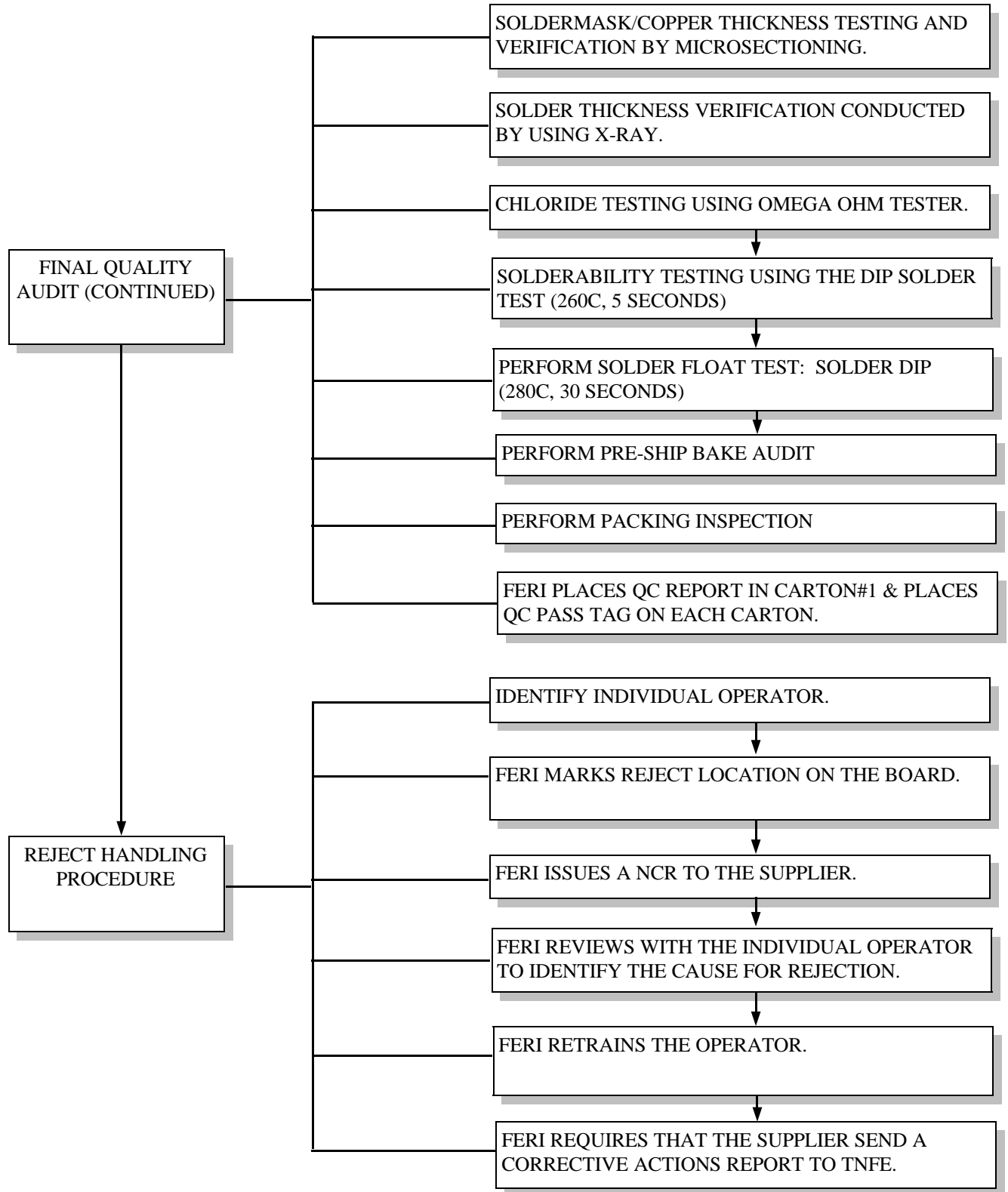
# FAR EAST WORK PROCESS

# KEY JOBS TO BE DONE



# FAR EAST WORK PROCESS

# KEY JOBS TO BE DONE



FAR EAST WORK PROCESS

KEY JOBS TO BE DONE

INCOMING  
MATERIAL &  
WAREHOUSING

FERI PERFORMS RANDOM AUDITS OF IQC INSPECTION & WAREHOUSE CONTROL BASED ON FIFO. IN FIRST-OUT PROCEDURE, SHELF LIFE, HAZARD CHEMICAL & STORAGE ENVIROMENTAL COMPLIANCE CONTROL IS ALSO MONITORED.



NCR (NON-  
COMPLIANCE  
REPORT) HANDLING

SEE ATTACHED ONE PAGE FLOWCHART EXPLAINING OUR PROCEDURE IN HANDLING CUSTOMER NON-COMPLIANCE OR CONFORMANCE REPORTS.